



House and Land Package

Marley



Dale Alcock

Price From \$566,850**

Frontage 15m

SQM 450sqm

Features

- Spacious kitchen with scullery
- Reverse cycle ducted air conditioning
- Caesarstone benchtops throughout



Ask about our Landscaping & Fencing Extras*!**

See www.iluma.mirvac.com/Promotions for the terms and conditions of this offer.

Contact **Fran Wallis** from Iluma on 0409 220 787 or **Todd Bowler** from Dale Alcock on 0409 803 408.

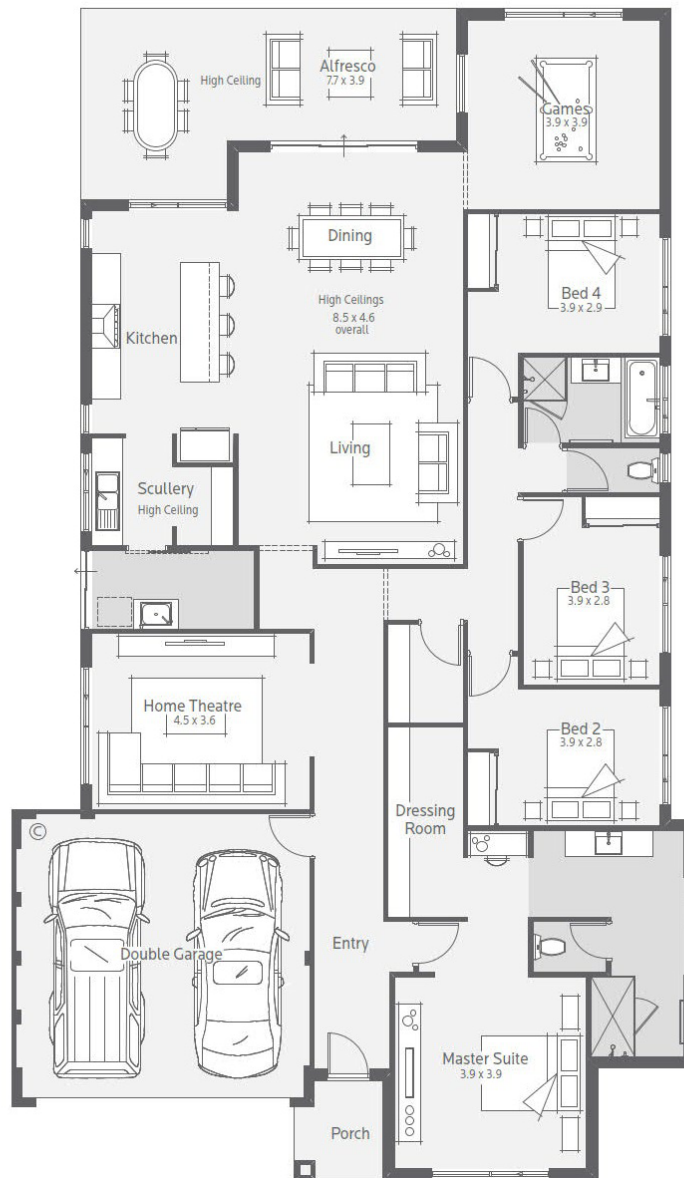
Iluma Private Estate Sales & Information Centre
Corner Luminous Boulevard and Pegasus Road
Bennett Springs, WA, 6063

T 0409 220 787
www.iluma.mirvac.com

Level 39, 108 St Georges Terrace
Perth WA 6000
Australia

PO Box 7488
Cloisters Square WA 6850
Australia

T +61 8 9424 9900
www.mirvac.com



House and land sales relating to the business of Mirvac Limited. Illustration and artist's impressions of buildings, interiors and views are intended to be indicative only and may include upgrade items above standard specifications. Package includes land price, base home price and site works allowance, and is indicatively only and subject to change (including increase). Site works allowance can only be finalised following a survey to be carried out by the builder (at your cost). Other costs and fees are payable in addition to those quoted including transfer/stamp duty, settlement fees, registration fees, legal fees, finance costs, site works, consultants' fees, survey fees, approvals, service connections and variations. Mirvac reserves the right to withdraw or alter any package at any time without notice in its absolute discretion. See iluma.mirvac.com for full terms and conditions. Produced 08 June 2020.